

# User manual

## Firebird RDBMS installation notes

## Installation notes for Firebird RDBMS

**Document history**

Version	Comment
Version 1.0	February 2011: version 1.0 of installation notes for Firebird RDBMS
Version 1.1	October 2014: Updated to reflect transition to Firebird 2.5

**Issue date:** October 2014

**Language:** English

If you have questions or comments that relate to this document, please send them to [ehscont@oecd.org](mailto:ehscont@oecd.org) or visit the QSAR Toolbox discussion forum at [https://community.oecd.org/community/toolbox\\_forum](https://community.oecd.org/community/toolbox_forum)

**Table of Contents**

**1 Introduction ..... 4**

**2 Requirements ..... 4**

**3 Installation..... 4**

## Installation notes for Firebird RDBMS

## 1 Introduction

This document provides a summary description of the installation procedure of the Firebird RDBMS set-up kit on a local PC operating Microsoft® Windows®. It describes the installation with regard to the OECD QSAR Toolbox (server and standalone versions).

## 2 Requirements

Firebird makes efficient use of system resources. Both server and clients are modest in their disk space and memory requirements. Some specific details can be seen here: <http://www.firebirdsql.org/manual/ufb-about-sysreq.html>

## 3 Installation

The Firebird installation is started from the **Firebird 2.5.3 Install** menu item of the Toolbox installation bootstrap application (Figure 1).



Figure 1

Installation notes for Firebird RDBMS

The bootstrap application determines the installer version needed (32 bit or 64 bit) and starts the appropriate Firebird installation package.

If there is another instance of Firebird already installed (e.g. Firebird 2.1 from a previous Toolbox installation) the new install will notify the user that an older version is present and alert them that it will be uninstalled.

After the start of the installer follow the installation steps. The **Select Components** dialog should look like Figure 2. These are set by the batch file with the command line before Firebird setup startup so there shouldn't be any need to change them yourself.

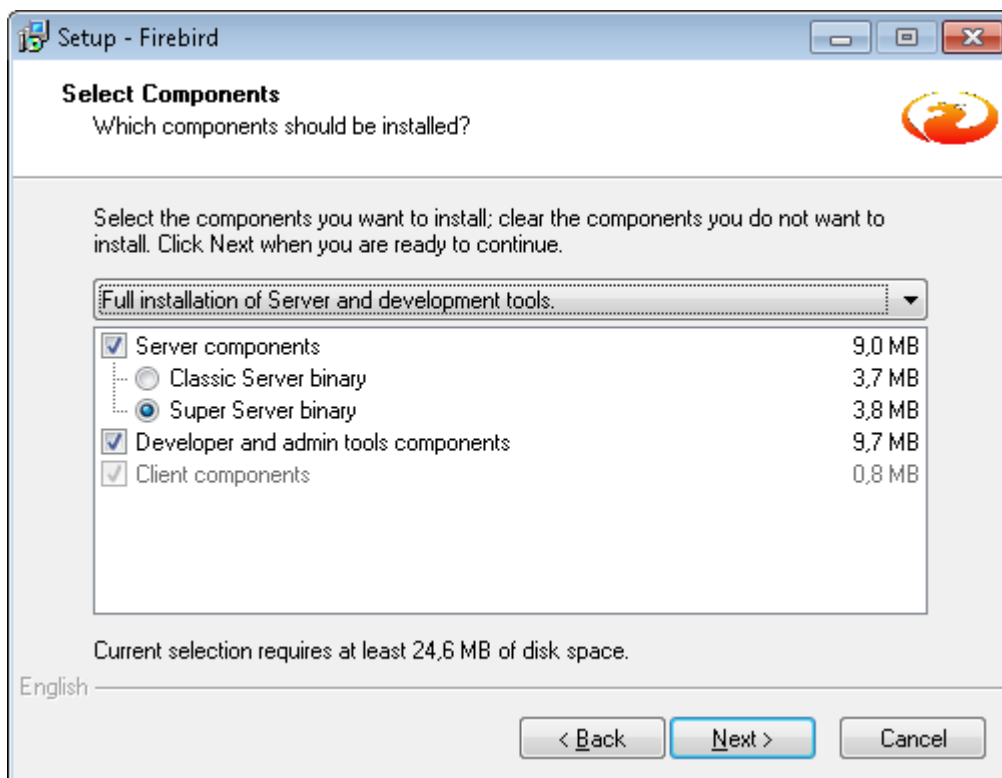


Figure 2

Installation notes for Firebird RDBMS

The **Select Additional Tasks** sets the mode that the server will run in and whether it should be started with the computer. It should be set as outlined in Figure 3.

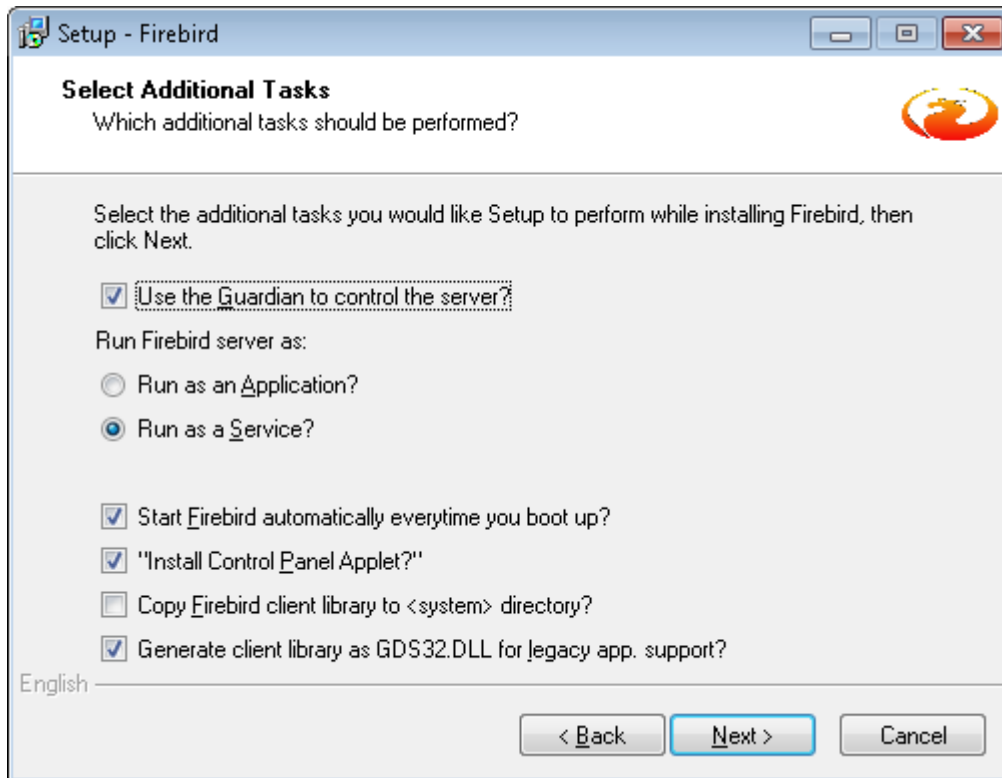


Figure 3

Follow the next installation steps until completion of the installation.

## 4 Updating and InterBase compatibility

Firebird and InterBase RDBMS have common ancestry so some manual configuration might be needed in order for them to work on the same machine. Check Firebird documentation for information on how to make such configurations (for instance [Running Firebird and InterBase together](#))

**OECD**

2, rue André Pascal  
75775 Paris Cedex 16  
France

Tel.: +33 1 45 24 82 00

Fax: +33 1 45 24 85 00

[ehscont@oecd.org](mailto:ehscont@oecd.org)